

Final conference 'European classification of higher education institutions: presenting the tool'



Implementing U-Map

Stockholm 28th – 29th of October
Frans van Vught



Criteria for Institutionalisation

- Inclusiveness
- Independence
- Professional approach
- Sustainability
- Legitimacy



Models for Operational Implementation

- Market model
- Government model
- Stakeholder model
- Independent organisation model

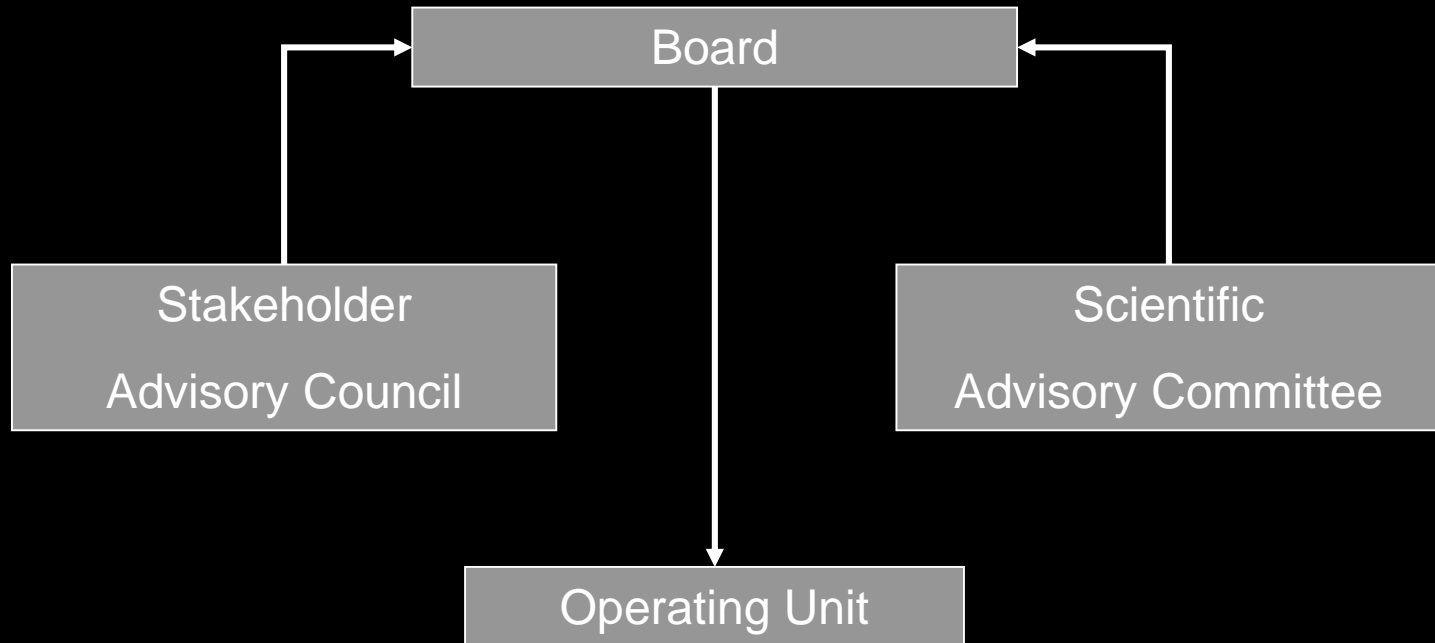


Assessing the Models

Criteria Models	Inclusiveness	Independence	Professional approach	Sustainability	Legitimacy
Market	-	+/-	+/-	-	-
Government	+	+/-	+--/	+/-	-
Stakeholder	-	+/-	+/-	+/-	+
Independent organisation	+/-	+	+/-	+/-	+/-



Organisational Structure





Initial Phase

- Not establish full new organisation
- Operate on project basis
- By existing professional organisation(s)
- Supervised by independent Board
- With Stakeholder Advisory Board and Scientific Advisory Committee



Business Plan

Fixed costs:

- data gathering
- information technology support
- communication and marketing
- research analysis
- meeting costs (Board, Council, Committee)

Variable costs:

- assuming funding on the basis of “subscriptions” of systems and institutions
- assuming 50% coverage of all Europe’s higher education institutions within three years after launch

Costs estimations:

- Start-up funding to cover fixed costs for the first two years: **± € 350.000**
- Start-up costs to enable 40 systems to join in the first three years: **± € 400.000**
- Average costs to an institution joining during start-up phase: **± € 3.000** on joining and **± € 3.000** for every subsequent three year period (or **± € 1.000** per annum)
- After start-up period (two years) average institutional three-year subscription costs will increase from **± € 3.000** to **± € 4.000**.

U-Map



U-Map

Thank you for your attention.

www.u-map.eu

Stockholm 28th – 29th of October
Frans van Vught